

Ohio's Strategic Prevention Framework Partnership for Success Initiative

Developing a Logic Chain: A Facilitator's Guide

An on-demand learning event, presented by:
Ohio's SPF-PFS Data Mini-Grantee
Project Directors, OSET and OCAM

June 2019



STRATEGIC PREVENTION FRAMEWORK PARTNERSHIPS FOR SUCCESS (SPF-PFS)

Who's who?



Sherry Stout
Project Director,
Adams County
Medical Foundation



Mollie Stevens
Project Director,
Impact Prevention
in Lawrence County



Christi Valentini-Lackner
Coach, OCAM



Laura Milazzo
Local Evaluator,
OSET



STRATEGIC PREVENTION FRAMEWORK PARTNERSHIPS FOR SUCCESS (SPF-PFS)

Suggested Citation: Milazzo, L., Valentini-Lackner, C., Stevens, M., Stout, M. & Craycraft, H. (2019, June). *Ohio's SPF-PFS Initiative -- Developing a Logic Chain: A Facilitator's Guide*. Athens, OH: Voinovich School of Leadership and Public Affairs at Ohio University.

Learning Objectives



Laura Milazzo
Local Evaluator,
OSET

1. Construct a data-driven theory of change using a logic chain model.
2. Understand how the logic chain components relate to short-term, mid-term and long-term outcomes.
3. Utilize a theory of change or logic chain to help strengthen strategy selection.



STRATEGIC PREVENTION FRAMEWORK PARTNERSHIPS FOR SUCCESS (SPF-PFS)

Ohio's SPF-PFS Initiative: Funding and Goals

- Funding through OhioMHAS from SAMHSA
- Goals of the Initiative:
 - Reduce underage drinking among persons aged 12 to 20
 - Reduce prescription drug misuse and abuse among persons aged 12 to 25



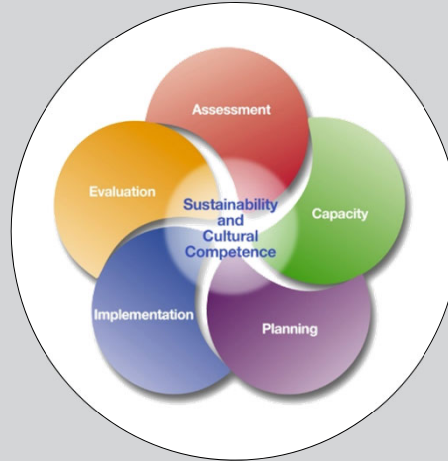
STRATEGIC PREVENTION FRAMEWORK PARTNERSHIPS FOR SUCCESS (SPF-PFS)

Suggested Citation: Milazzo, L., Valentini-Lackner, C., Stevens, M., Stout, M. & Craycraft, H. (2019, June). *Ohio's SPF-PFS Initiative -- Developing a Logic Chain: A Facilitator's Guide*. Athens, OH: Voinovich School of Leadership and Public Affairs at Ohio University.

SAMHSA's Strategic Prevention Framework



Christi Valentini-Lackner
Coach, OCAM



STRATEGIC PREVENTION FRAMEWORK PARTNERSHIPS FOR SUCCESS (SPF-PFS)

Data Mini-Grantee Project Directors



- Mollie Stevens, Project Director
- Executive Director of Impact Prevention, Inc.
- River Hills Prevention Connection
- Lawrence County, Ohio

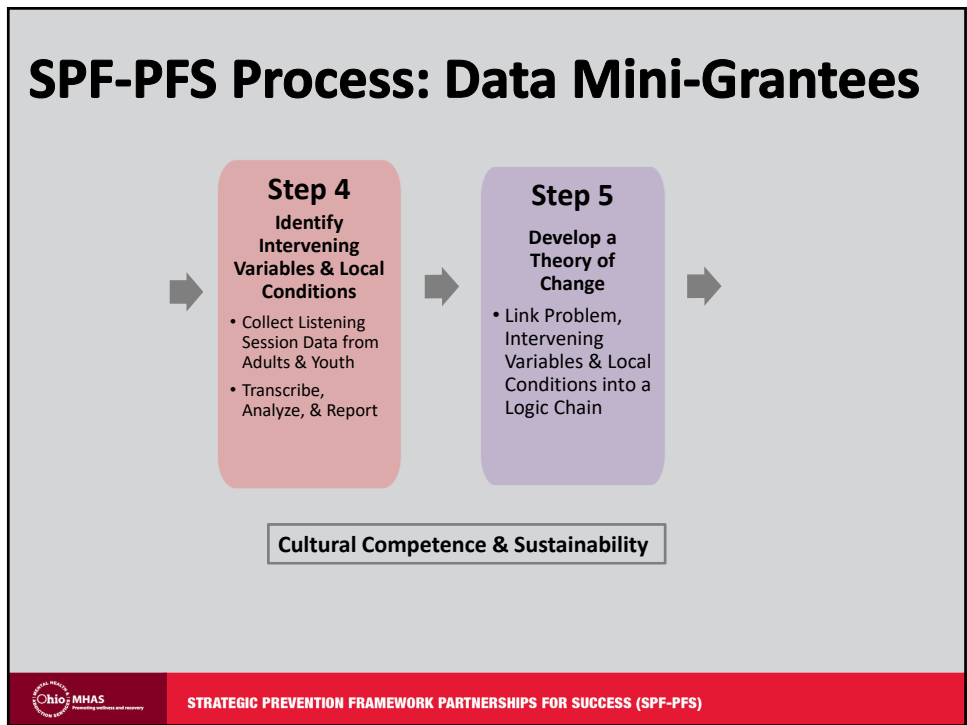
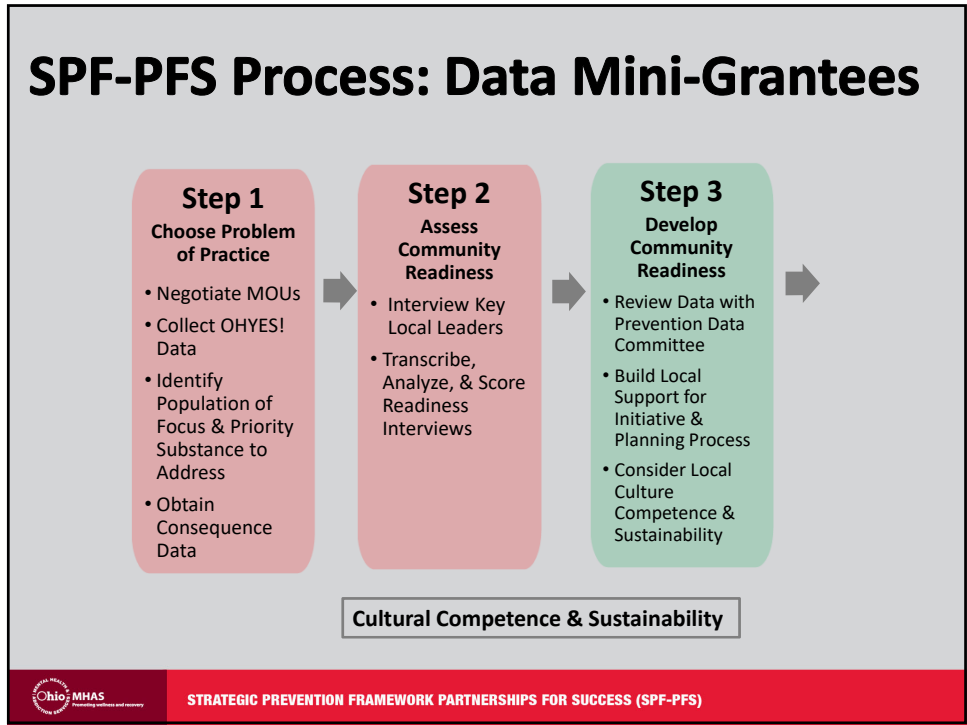


- Sherry Stout, Project Director
- Executive Director of Adams County Medical Foundation
- Adams County Health & Wellness Coalition
- Adams County, Ohio

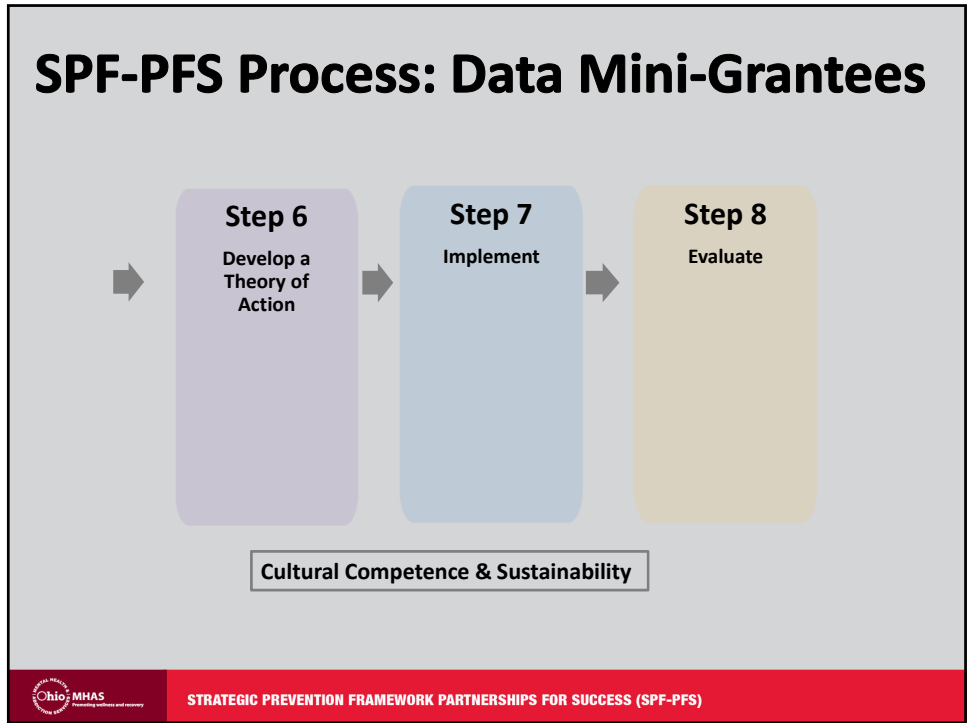


STRATEGIC PREVENTION FRAMEWORK PARTNERSHIPS FOR SUCCESS (SPF-PFS)


Suggested Citation: Milazzo, L., Valentini-Lackner, C., Stevens, M., Stout, M. & Craycraft, H. (2019, June). *Ohio's SPF-PFS Initiative -- Developing a Logic Chain: A Facilitator's Guide*. Athens, OH: Voinovich School of Leadership and Public Affairs at Ohio University.



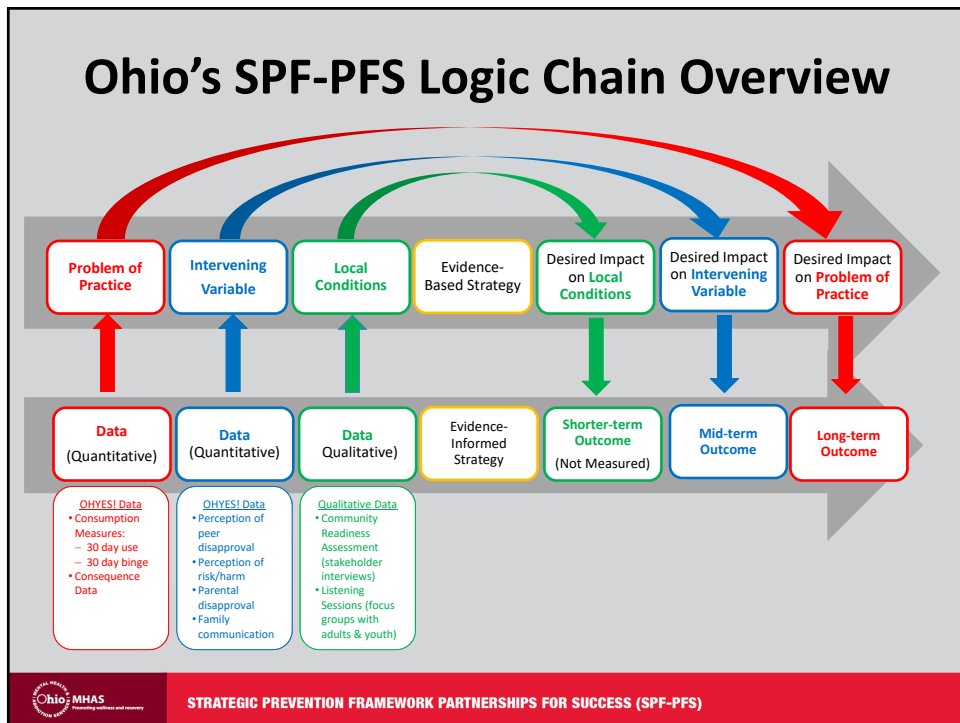
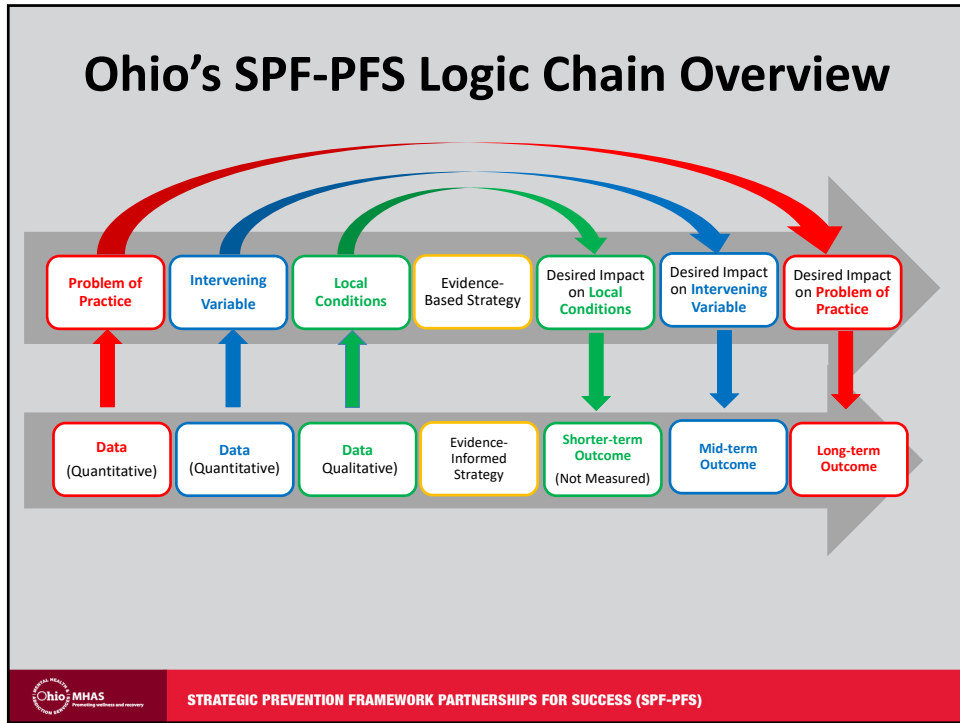
Suggested Citation: Milazzo, L., Valentini-Lackner, C., Stevens, M., Stout, M. & Craycraft, H. (2019, June). *Ohio's SPF-PFS Initiative -- Developing a Logic Chain: A Facilitator's Guide*. Athens, OH: Voinovich School of Leadership and Public Affairs at Ohio University.



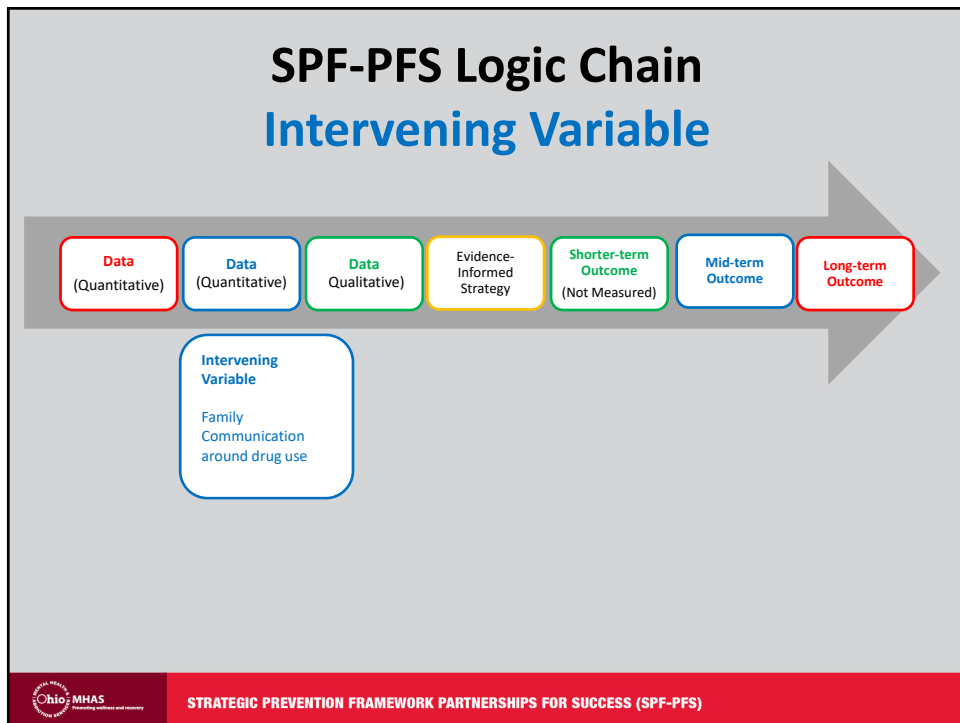
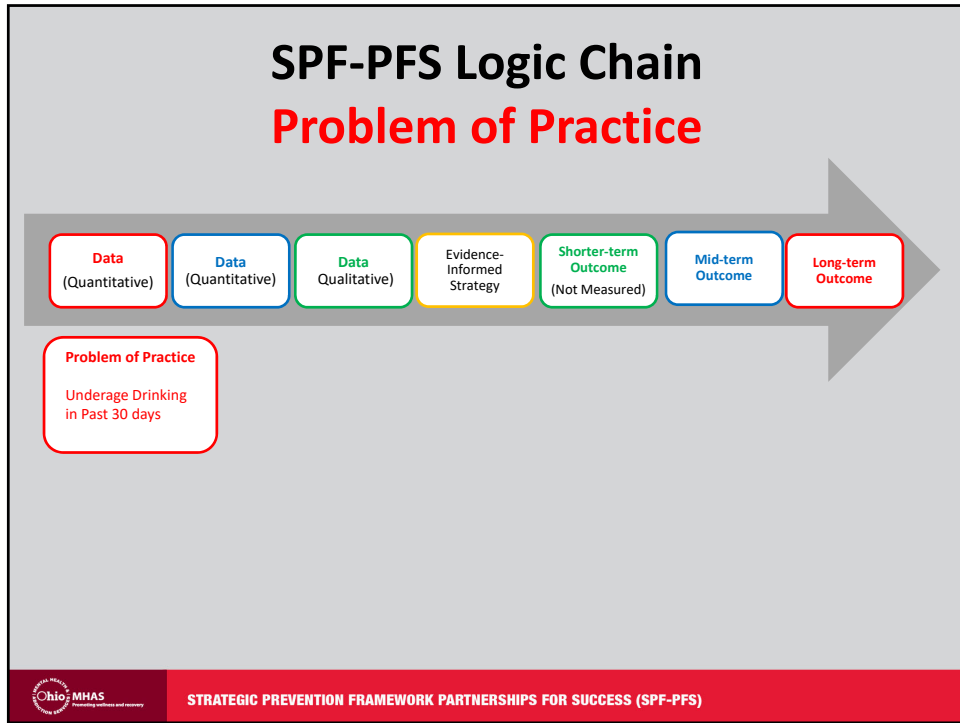
What is a theory of change and logic chain?

 STRATEGIC PREVENTION FRAMEWORK PARTNERSHIPS FOR SUCCESS (SPF-PFS)

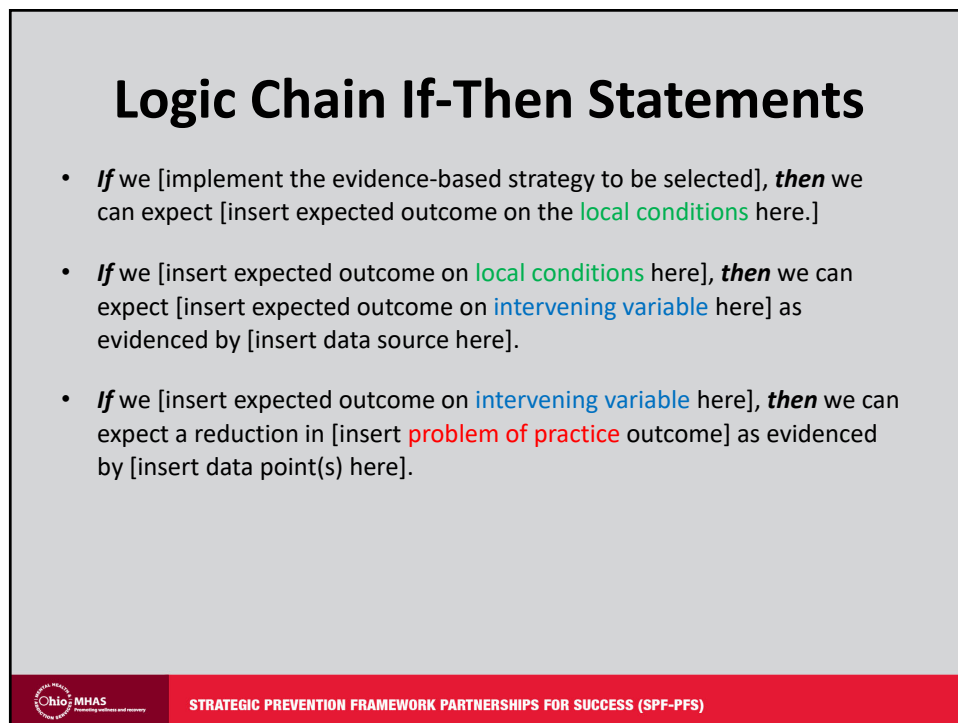
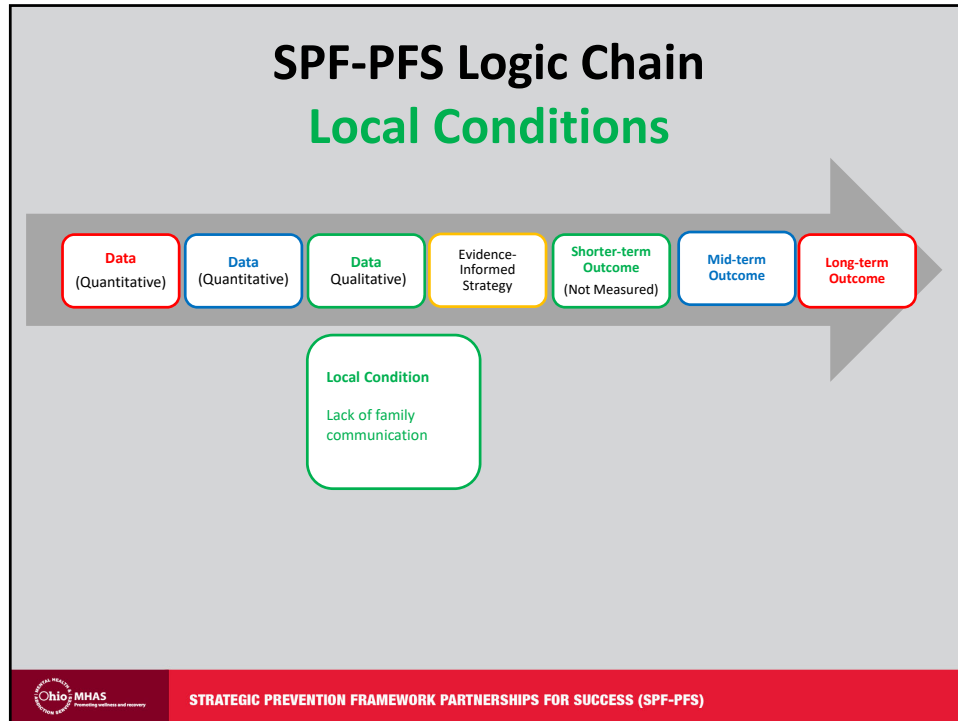
Suggested Citation: Milazzo, L., Valentini-Lackner, C., Stevens, M., Stout, M. & Craycraft, H. (2019, June). *Ohio's SPF-PFS Initiative -- Developing a Logic Chain: A Facilitator's Guide*. Athens, OH: Voinovich School of Leadership and Public Affairs at Ohio University.



Suggested Citation: Milazzo, L., Valentini-Lackner, C., Stevens, M., Stout, M. & Craycraft, H. (2019, June). *Ohio's SPF-PFS Initiative -- Developing a Logic Chain: A Facilitator's Guide*. Athens, OH: Voinovich School of Leadership and Public Affairs at Ohio University.



Suggested Citation: Milazzo, L., Valentini-Lackner, C., Stevens, M., Stout, M. & Craycraft, H. (2019, June). *Ohio's SPF-PFS Initiative -- Developing a Logic Chain: A Facilitator's Guide*. Athens, OH: Voinovich School of Leadership and Public Affairs at Ohio University.



Suggested Citation: Milazzo, L., Valentini-Lackner, C., Stevens, M., Stout, M. & Craycraft, H. (2019, June). *Ohio's SPF-PFS Initiative -- Developing a Logic Chain: A Facilitator's Guide*. Athens, OH: Voinovich School of Leadership and Public Affairs at Ohio University.

Logic Chain If-Then Statements

- **If** we [implement the evidence-based strategy to be selected], **then** we can expect an increase in the number of high school students reporting that their **parents have talked with them about the dangers of tobacco, alcohol, or drug use.**
- **If** we increase the number of youth reporting that their **parents talk to them about the dangers associated with alcohol, tobacco, or drug use,** **then** we can expect to see a decrease in the number of youth reporting that their **parents do not talk to them about the dangers of tobacco, alcohol or drug use** as evidenced by the OHYES! data.
- **If** we see a decrease in the number of youth reporting that their **parents do not talk to them about the dangers of tobacco, alcohol or drug use,** **then** we can expect a reduction in **underage drinking** as evidenced by youth who report consuming alcohol in the past 30 days.

